

Works for Jandorf Socket Covers:

- #60225 - Candelabra Base - Drip Candle
- #60226 - Candelabra Base - White
- #60227 - Standard Base - White

What's Inside

2 - 4" Socket Covers

What's Needed

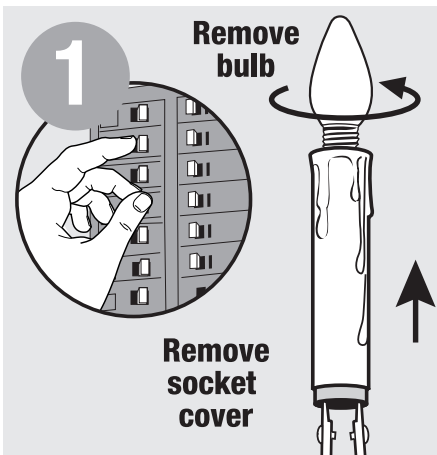
- Ruler
- Serrated Knife
- Cutting Board

What's Its Purpose

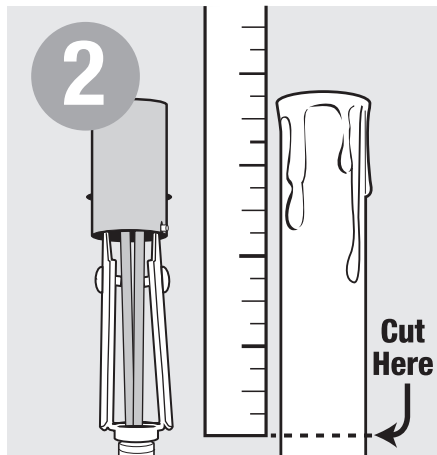
Covers candelabra base socket or standard base socket.

Warning

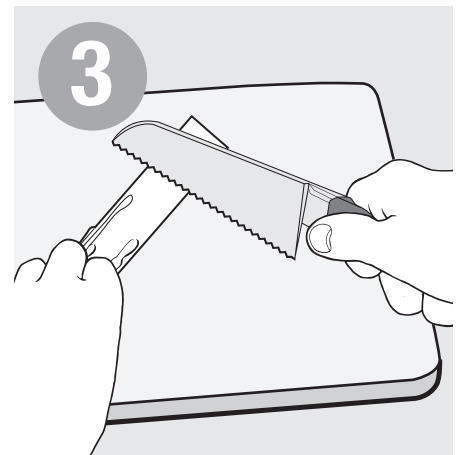
- Before beginning **TURN OFF POWER** to the light from the fuse or circuit breaker.
- Follow local electrical regulations or codes when installing and using this product.
- For use with a maximum 25W bulb.



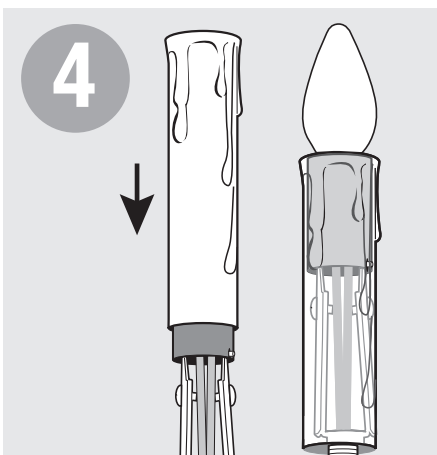
Remove shade, light bulb and old socket cover.



Measure length of socket from bottom to tip.



Trim new socket cover to match.



With cut end facing down, slide new socket cover over socket.